

hotel june

WEST LA



From the team behind Proper, meet Hotel June.

Hotel June is a nod to the free-thinking spirit and soul of California, inspired by good friends coming together and dreaming up the ideal place to stay, gather, get inspired and break bread together. With an iconic Westside location wrapped in a timeless mid-century modern building, Hotel June is imbued with inviting design, vibrant food, and thoughtful details. It's where creative happenings draw you closer to the city outside your door, and the gathering crowd inspires a renewed love for time away from home. Welcome to June... where it's a Saturday afternoon all year long.

DESIGN

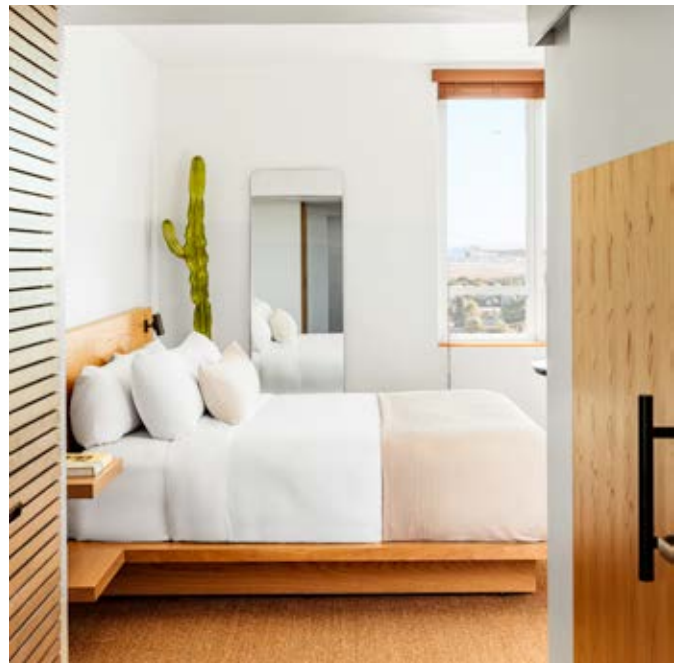
Hotel June seamlessly merges the past and present — pairing mid-century nostalgia with coastal minimalism, all set in a classic Westside building designed by renowned LA architect Welton Becket. With modern interiors by the award-winning Studio Collective, Hotel June is at once airy and cozy, blending clean lines and warm natural woods, earthy finishes, and custom furnishings.

THE LOCATION

Hotel June's prime location allows you to be just minutes away from everywhere you want to be on LA's Westside — five minutes to Playa Del Rey Beach, Playa Vista (Silicon Beach), Otis College of Art and Design, and Loyola Marymount University and ten minutes to Venice, Marina Del Rey, and Culver City. Whether you're headed to the beach, a show at The Forum, or a game at the nearby SoFi NFL stadium, our location allows for ease in traveling around the city and easy access to a range of restaurants, boutiques, and parks within walking distance.

MEETINGS & EVENTS

From intimate weddings to grand events, team conferences to brand activations, Hotel June is made for gathering, with indoor, outdoor, and poolside spaces designed to bring ideas to life. Our food & beverage experience is helmed by Steve Livigni from the award-winning Scopa — focusing on personalized and specifically-curated menus that elevate group fare for a one-of-a-kind experience.



THE ROOMS & SUITES

250 spacious, modern rooms and suites offer sweeping city and coastal views that range from Downtown L.A. to the Pacific Ocean. Cozy rooms feature modern interiors with a relaxed beach-living vibe paired with custom white oak platform beds, Simmons Felicity mattresses, Fili D'oro fine luxury linens, and side tables that easily transition into remote working setups. Considered touches include LED lighting, Aesop bath products, and expansive noise-cancelling windows that allow the California golden light to stream in.

TO EAT & DRINK

Hotel June's dining concepts are helmed by Steve Livigni from award-winning Scopa, with menus inspired by a culinary road trip from Santa Barbara to Northern Baja, Mexico.

The breezy Baja-inspired Caravan Swim Club is our poolside gathering place for everything from cabana drinks to fire pit gatherings, creative meetings to laid-back lounging. Spend the day by the pool enjoying cocktails and music or relax on the elevated terrace — and enjoy the view with house favorites like it all with our menu of local caught grilled local fish, organic steaks, seasonal salads, bright oysters from our raw bar, and shareable snacks paired with biodynamic wines, craft beer, and small-batch tequilas.

ABOUT

- 250 rooms: 164 singles, 66 doubles (queen/queen) and 20 suites
- Classic Mid-Century Modern Building Designed by Award-Winning LA Architect Welton Becket
- Easily Accessible Westside Location: 1 Mile from LAX, Five Minutes to Playa Del Rey Beach, Playa Vista (Silicon Beach), Otis College of Art and Design, and Loyola Marymount University
- Walking Distance to Range of Dining, Entertainment, Outdoor, and Shopping Options
- Scenic Route: On-Site, All-Day Lounge, Restaurant, Cafe, and Bar
- Caravan Swim Club: On-Site, Baja-Inspired Poolside Cafe, Restaurant, and Lounge
- Flexible Indoor-Outdoor Meeting and Event Spaces
- 24-Hour Fitness Center

AMENITIES

- Heated Outdoor Pool
- Lushly Landscaped Sun Deck with Cabanas and Fire Pit
- Two On-Site Restaurant and Bar Destinations
- 24-Hour Fitness Center: Peloton Bikes, Woodway Treadmills, Octane AirDyneX Bike, Water Rower, Free Weights, Dumbbells, Kettlebells and Core/Strength Training Equipment
- In-Room Mini Fridge
- Sustainability-Focused Water, Plastic, Energy, Food & Beverage Initiatives
- Unique Meeting Spaces
- Complimentary Wi-Fi in Common Areas
- Pet Friendly with fee

SERVICES

- Valet Parking
- 24/7 Front Desk Service
- Turndown Service (Available Upon Request)
- Rollaway Rentals and Cribs Available
- Linus Bike Rentals
- Same-Day Dry Cleaning and Laundry Available

ROOMS

- Fili D'oro Luxury Linens
- Simmons Felicity Mattresses
- Aesop Bath Products
- Large Operable, Noise-Cancelling Windows
- Designated Work Area
- HDTV with Apple TV
- High-Speed Wi-Fi
- Fabric Steamers
- Laptop-Accommodating Safes
- Central Air Conditioning and Heat
- Luggage Racks
- Connecting Rooms Available
- ADA Rooms Available

MEETINGS & EVENTS

11,000 Square Feet of Flexible Meeting & Event Spaces:

- Caravan Swim Club: 4,769 SF
Pool Deck: 2,842 SF
Upper Deck: 1,927 SF
- The Pathway: 4,100 SF
- Scenic Route: 1,047 SF
- Boardroom (4 Available)
5th Floor 231 SF
6th Floor 231 SF
7th Floor 223 SF
8th Floor 296 SF